

Coventry tPCT Prescribing Report

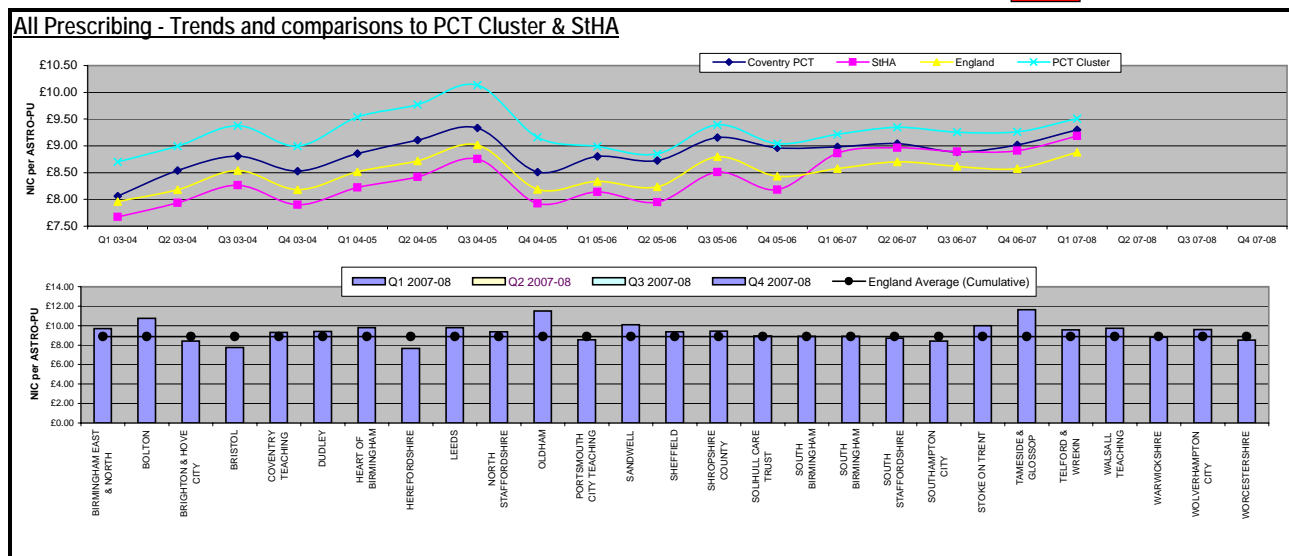
July 2007

Financial Information	Budget	Cumulative Spend	Forecast Out-turn	Forecast Over/underspend
GP Prescribing - Excluding Specialist Drugs	£41,664,417	£13,757,250	£42,500,000	£835,583
GP Specialist Drug Prescribing	£6,092,166	£2,081,262	£6,429,601	£337,435
Total GP Prescribing	£47,756,583	£15,838,512	£48,929,601	£1,173,018
Other services' prescribing*	£194,852	£69,331	£236,769	£41,917
Out-of-hours & Walkin Centre Prescribing	£120,000	£41,064	£105,999	-£14,001
Coventry tPCT Total	£48,071,435	£15,948,907	£49,272,369	£1,200,934

* including Anchor Centre, Meridian, Clinical Assessment Services etc [Does NOT include HIV/GUM prescribing]

Incentive Scheme 2007-08 Targets			Period: May - July 2007
Therapeutic Group	1st line choice from PPL	Target	% of total items within the therapeutic group, where 1st line drug(s) prescribed [Bold and underlined = improved on last month]
Statins	Simvastatin or Pravastatin	75%	<u>72%</u>
Drugs affecting the renin-angiotensin system	ACE rather than ARB	75%	<u>71%</u>
ACE inhibitors	Lisinopril or ramipril	80%	<u>67%</u>
ARBs	Olmesartan, Telmisartan, irbesartan or candesartan	80%	<u>54%</u>
Antiplatelets	Aspirin dispersible	87.5%	<u>87%</u>
Proton Pump Inhibitors	Omeprazole or lansoprazole	90%	<u>78%</u>
NSAIDs	Ibuprofen, diclofenac, naproxen, mefenamic acid	70%	<u>62%</u>

Within 5% of target
 More than 5% outside target



Coventry tPCT - Prescribing Report

Percentage Change in Prescribing

(Period: Apr - Jun 06 compared to Apr - Jun 07)

BNF Chapter	% Increase/Decrease in Cost		
	Coventry	PCT Cluster	England
Gastro-Intestinal	-9%	-10%	-12%
Cardiovascular	-2%	3%	1%
Respiratory	1%	4%	3%
CNS	13%	12%	12%
Endocrine	5%	5%	4%
Musculoskeletal	-6%	-2%	-4%
All Prescribing	4%	5%	4%

Prescribing Indicators (Apr - Jun 07)

KEY: Green = better than or equal to PCT Cluster, Red = worse than PCT Cluster

Drug Group	Indicator	Coventry	PCT Cluster
All Prescribing	NIC/ASTRO-PU	£9.30	£9.51
% Generics	% Generic items	83%	83%
Benzodiazepine Prescribing	ADQ/STAR-PU	1.979	2.051
Antibacterial Prescribing	Items/STAR-PU	0.057	0.054
Drugs affecting renin-angiotensin system	ADQ/STAR-PU	1.74	1.74
Statins	ADQ/STAR-PU	1.14	1.37
Inhaled Corticosteroids	NIC/ADQ	£0.37	£0.42
Inhaled Corticosteroids	ADQ/STAR-PU	1.06	1.06
Oral NSAIDs	NIC/ADQ	£0.25	£0.25
Oral Antidiabetic Drugs	ADQ/STAR-PU	3.70	3.37
Enteral Feeds (Sip)	NIC/PU	£0.36	£0.29
% Cost New Drugs	% of total spend	4%	5%

StHA Targets - PCT Prescribing Efficiencies

KEY: Green = Achieving Target, Red = Not Achieving Target

Description	Target	May - July 2007 (Rolling 3 months)	
		Coventry tPCT	StHA
% of Amlodipine to be prescribed as generic amlodipine (maleate)	95%	99%	98%
% of Ramipril to be prescribed as generic capsules	95%	99%	97%
% of Omeprazole to be prescribed as generic capsules	95%	96%	94%
% of Lansoprazole to be prescribed as generic capsules	95%	97%	93%

Repeat Dispensing (RD) during May - July 2007

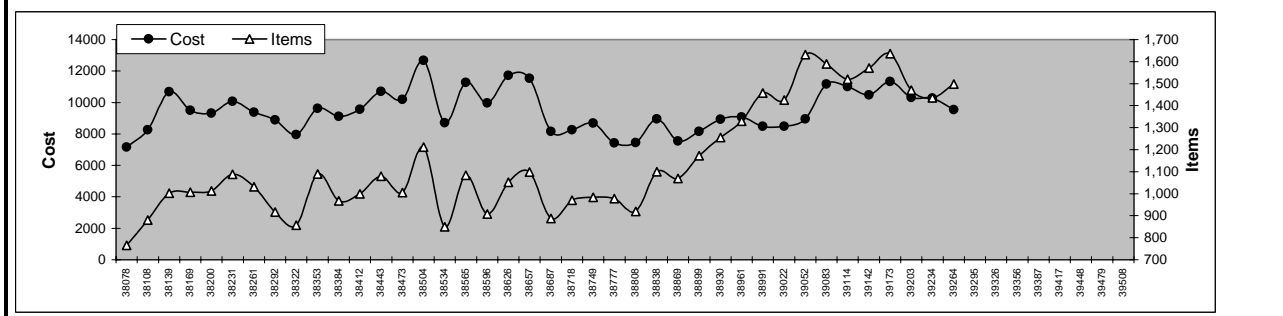
(Target = 10%)

No. of First Form items	No. of Subsequent Form items	Total RD items	RD items as a % of all Prescribed items
30,880	61,251	92,131	7.1%

28 Day Prescribing (May - Jul 07)

Average no. of days per script = 33

Non-Practice Prescribers



2007- 08 Preferred Prescribing List Targets

Jul-07

Prescriber Name	May - July 2007							
	Statins	ACE / ARB	ACEs	ARBs	Antiplatelet drugs	PPIs	NSAIDs	SSRIs
	75%	75% / 25%	80%	80%	87.5%	90%	70%	80%
HOLBROOKS HEALTH TEAM	91%	77%	98%	85%	89%	90%	83%	91%
WOODWAY MEDICAL CENTRE	81%	80%	81%	86%	82%	88%	79%	93%
LONGFORD MEDICAL CENTRE	91%	80%	73%	80%	94%	93%	77%	88%
FORREST MEDICAL CENTRE	81%	77%	84%	85%	88%	86%	76%	93%
HENLEY GREEN MEDICAL CENTRE	72%	75%	85%	88%	88%	86%	63%	92%
TANYFRON	79%	49%	84%	85%	86%	83%	89%	90%
JUBILEE HEALTH CENTRE	81%	82%	86%	70%	88%	81%	74%	77%
MANSFIELD MEDICAL CENTRE	79%	75%	68%	87%	89%	82%	67%	89%
TORCROSS MEDICAL CENTRE	80%	77%	83%	75%	82%	88%	60%	91%
WINDMILL ROAD HEALTH AND FAMILY CENTRE	83%	77%	60%	80%	93%	90%	82%	70%
THE FORUM HEALTH CENTRE	82%	77%	76%	76%	87%	84%	62%	90%
STOKE ALDERMOOR MED CTR	87%	72%	84%	61%	92%	81%	77%	81%
PARK LEYS MEDICAL PRACTICE	67%	72%	78%	91%	92%	86%	60%	87%
BROOMFIELD PARK MED.CTR.	80%	76%	74%	48%	89%	87%	71%	83%
THE CROSSLEY PRACTICE	81%	79%	88%	61%	85%	86%	51%	75%
TILE HILL SURGERY	82%	61%	62%	66%	81%	90%	78%	87%
EDGWICK MEDICAL CENTRE	72%	68%	67%	63%	81%	83%	76%	85%
ENGLETON HOUSE SURGERY	72%	77%	81%	38%	87%	86%	70%	83%
DADHANIA SURGERY	59%	60%	74%	71%	85%	89%	65%	90%
HKMC	75%	77%	62%	71%	88%	79%	57%	83%
WOOD END HEALTH CENTRE	78%	78%	69%	37%	85%	86%	76%	82%
BARLEY LEA HOUSE	77%	78%	74%	31%	86%	81%	72%	82%
WHEELWRIGHT LANE SURGERY	87%	56%	57%	48%	90%	88%	68%	84%
WILLENHALL PRIMARY CARE CENTRE - 2	78%	79%	67%	48%	84%	78%	57%	84%
JUBILEE HEALTHCARE	70%	69%	69%	56%	87%	75%	57%	89%
FOLESHILL ROAD SURGERY	77%	67%	72%	89%	79%	77%	48%	60%
PHOENIX FAMILY CARE	75%	69%	67%	40%	85%	75%	70%	86%
BELL GREEN HEALTH CENTRE	74%	71%	64%	49%	87%	84%	54%	82%
DAVENTRY ROAD SURGERY	69%	77%	72%	42%	89%	81%	42%	94%
BALLIOL ROAD SURGERY	81%	72%	63%	53%	89%	73%	54%	80%
LIMBRICK WOOD SURGERY	65%	78%	58%	48%	76%	84%	64%	91%
HOLYHEAD SURGERY	67%	76%	65%	60%	84%	55%	73%	83%
SWANSWELL MEDICAL CENTRE	80%	62%	38%	78%	80%	74%	78%	71%
HILLFIELDS HEALTH CENTRE - 3	72%	78%	60%	40%	88%	79%	60%	76%
WALSGRAVE ROAD SURGERY - 2	64%	80%	54%	68%	86%	72%	48%	80%
KENYON MEDICAL CENTRES	70%	76%	56%	32%	87%	85%	57%	90%
PARADISE MEDICAL CENTRE	79%	62%	50%	43%	92%	72%	76%	73%
PARK HOUSE	74%	47%	64%	60%	89%	78%	60%	78%
MAIDVALE SURGERY	79%	69%	58%	53%	84%	76%	65%	64%
CENTRAL MEDICAL CENTRE	70%	65%	70%	52%	89%	70%	64%	65%
THE GABLES MEDICENTRE	65%	61%	69%	65%	89%	73%	42%	80%
GREEN LANE MEDICAL CENTRE	65%	71%	59%	40%	85%	87%	54%	82%
WALSGRAVE HEALTH CENTRE	77%	75%	61%	21%	89%	78%	59%	83%
ALLESLEY PARK MEDICAL CTR	70%	64%	55%	58%	88%	71%	61%	74%
WOODSIDE MEDICAL CENTRE	78%	61%	73%	27%	87%	69%	67%	75%
MOSELEY AVENUE SURGERY	76%	59%	58%	49%	86%	72%	52%	80%
QUINTON ROAD SURGERY	62%	74%	72%	24%	84%	65%	71%	81%
WESTWOOD MEDICAL H/CENTRE	75%	75%	57%	17%	85%	77%	64%	79%
BREDON AVENUE SURGERY	64%	67%	56%	52%	85%	72%	58%	74%
WILLENHALL OAK MEDICAL CENTRE	65%	69%	47%	47%	87%	79%	48%	85%
ALLESLEY VILLAGE SURGERY	68%	70%	75%	23%	88%	75%	44%	74%
WYKEN MEDICAL CENTRE	81%	50%	66%	73%	85%	53%	50%	58%
WALSGRAVE ROAD SURGERY - 1	52%	89%	39%	51%	85%	70%	50%	79%
HILLFIELDS HEALTH CENTRE - 1	67%	64%	71%	36%	81%	75%	54%	66%
WILLENHALL PRIMARY CARE CENTRE - 1	72%	73%	46%	40%	86%	54%	61%	79%
BROAD LANE SURGERY	61%	76%	59%	29%	88%	53%	64%	76%
HILLFIELDS HEALTH CENTRE - 2	68%	60%	40%	54%	91%	66%	55%	68%
COPSEWOOD MEDICAL CENTRE	61%	60%	65%	57%	84%	63%	45%	64%
STONEY STANTON MEDICAL CENTRE	44%	60%	48%	39%	87%	85%	52%	79%
GOVIND HEALTH CENTRE	49%	72%	59%	23%	90%	78%	38%	81%
KENSINGTON ROAD SURGERY	59%	70%	37%	33%	84%	66%	44%	89%
STATION STREET WEST SURGERY	50%	58%	36%	44%	89%	74%	40%	82%
SPRINGFIELD MEDICAL PRACTICE	53%	73%	43%	33%	88%	52%	50%	79%

Congratulations to:

HOLBROOKS HEALTH TEAM for retaining their position at the top of the table

WINDMILL ROAD HEALTH & FAMILY CENTRE for being the most improved practice, July data compared to June. (37% up overall)

Annotations and Explanations	At or above target	
Moved 50% or more from baseline * to 90% (or 100% for PPIs)		
None of the above		

* Baseline = Jan to Mar 07

Preferred list drugs	
ACE Inhibitors	Lisinopril or ramipril caps
Angiotensin Receptor Blockers	Candesartan, irbesartan, olmesartan, telmisartan
Statins	Simvastatin or pravastatin
PPIs	Lansoprazole caps or omeprazole caps
SSRIs	Fluoxetine, sertraline or citalopram
NSAIDs	Diclofenac, ibuprofen, naproxen, mefenamic acid
Antiplatelet drugs	Aspirin (low dose)

Average annual savings per ten patients by using preferred list drug	
ACE Inhibitors	£1,100
Angiotensin Receptor Blockers	£650
Statins	£1,750
PPIs	£1,750
SSRIs	£1,580
NSAIDs	£750

Overall PCT Progress - Baseline vs latest 3 months : % use preferred list drugs		
	Jan - Mar 07	May - Jul 07 (Latest 3 months)
ACE Inhibitors	64%	67%
Angiotensin Receptor Blockers	51%	54%
Statins	70%	72%
PPIs	76%	78%
SSRIs	81%	83%
NSAIDs	55%	62%
Antiplatelet drugs	87%	87%

